

050209

2007

4

"

+

"

5

1

2

3

4

5

1

1.1

1.2

2

2.1

2.2

3

3.1

3.2

4

4.1

4.2

5

5.1

5.2

6

6.1

6.2

7

—

7.1

7.2

8

8.1

8.2

9

9.1

9.2

10

4

6

160

4

1. Primary Korean 12

2. Intermediate Korean 12

3. Advanced Korean 10

TOPIK

4. Korean Conversation 16

5. Korean Reading 4

6. Korean-Chinese Translation 4

7. Basic Korean Writing 2

1. Cognitive Practice 1

2. Practice for Office Etiquette and Skills 1

3. Basic Language Skills Practice 2

4. Practice for International Trade 4

5. Comprehensive Language Practice 4

6. Graduation Internship 4

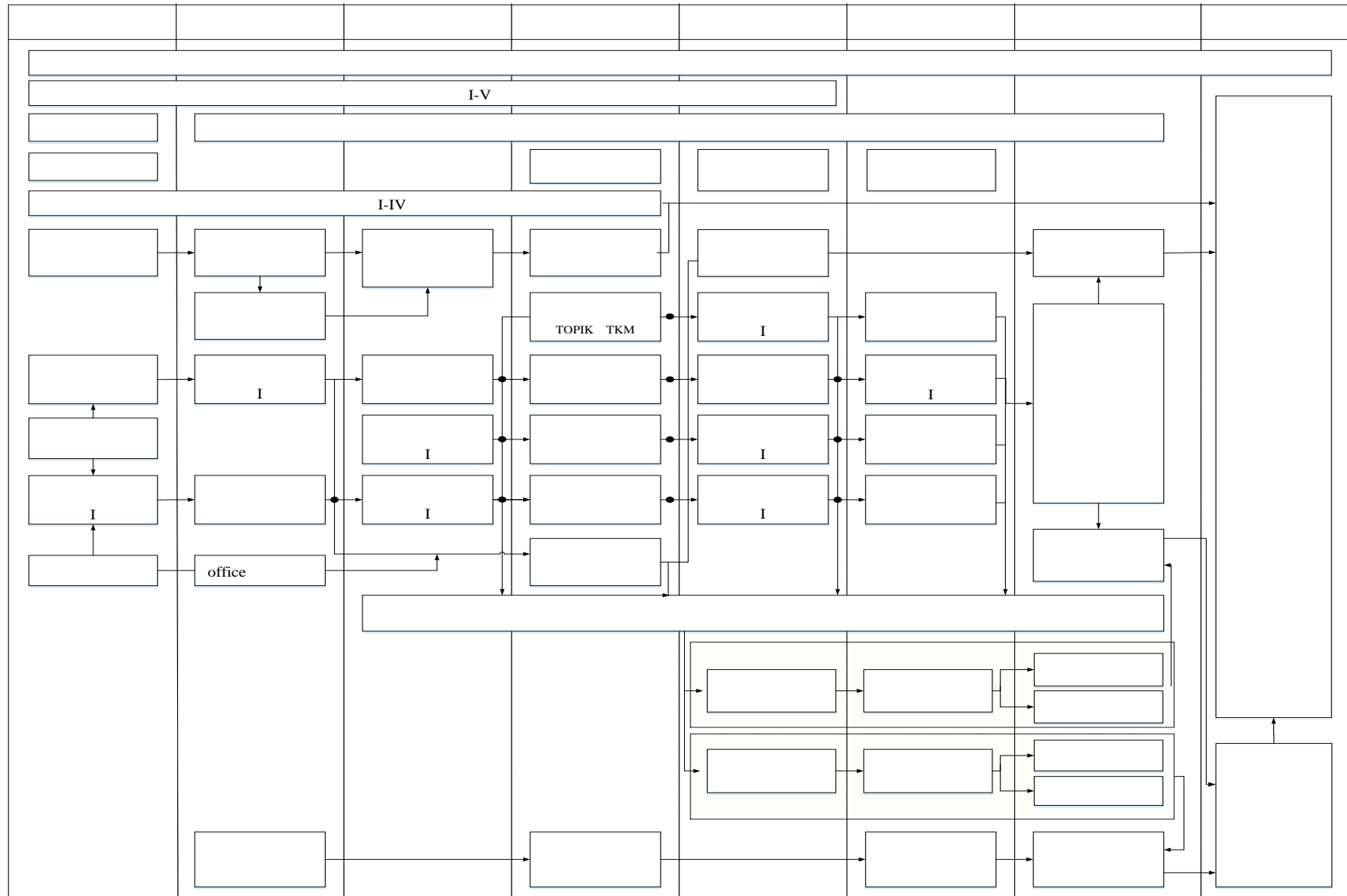
7. Graduation Thesis 12

	1901G0001		2	2			2 1
	1918G0002		3	2.5	0.5		3 1
	1910G0002		2	2			2 1
	1903G0001	A	3	3			4 1
	1902G0001		0.5		0.5		2 1
	1918G0001		3	2.5	0.5		3 2
	1901G0003		0.5	0.5			3 2
	1901G0004		2	2			2 2
	1905G0002	office	2.5	1.5	1		4 2
	1903G0002	A	3	3			4 2
	1902G0002		1		1		2 2
	1918G0004		5	4.5	0.5		5 3
	1903G0003	A	2	2			2 3
	1902G0003		1		1		2 3
	1918G0003		3	2.5	0.5		3 4
	1903G0004	A	2	2			2 4
	1902G0004		1		1		2 4
	1911G0001		2	2			2 4
	1901G0002		2	2			2 5
	1902G0005		0.5		0.5		1 5 6
	1901G0005		0.5	0.5			3 6

	1903P1046		2	2	0		2 4
	1903P1068		1.5	1	0.5		2 5
	1903P1047		2	2	0		2 6
	1903P1048		1.5	1	0.5		2 6
	1903P1069		1.5	0.5	1		2 7
	1903P1067		1.5	1	0.5		2 7
	1903P1020		1.5	0.5	1		2 7
	1903P1049		2	2	0		2 4
	1903P1050		1.5	1	0.5		2 5
	1903P1051		2	2	0		2 6
	1903P1052		1.5	1	0.5		2 6
	1903P1053		1.5	0.5	1		2 7
	1903P1054		1.5	1	0.5		2 7
	1903P1055		1.5	0.5	1		2 7
			18.5	8.5	10		18.5
			82.5	54.5	28		
	1901T0001		2		2		1
	1903T0006		1		1		2
	1903T0007		1		1		4
	1903T0008		2		2		6
	1903T0009		4		4		7
	1903T0010		4		4		7
	1903T0011		4		4		8
	1903T0012		12		12		8
			26		26		
			160	99	61		

			%		%
		43.5	27.2	7	4.4
		8	5	0	0
		32	20	6	3.8
		32	20	12	7.5
		18.5	11.6	10	6.2
		26	16.2	26	16.2
		160	100	61	38.1

	19	19	19	19	19	19	19	18
	2	2	2	2	2	2	2	2
	2	1	0	1	0	2	4	16
	15	16	17	16	17	15	13	
	16.5	17.5	15.5	15.5	12.5	8.5	3	
	6	5.5	5	7	6	7.5	8	
	27	28	25	26	23	19	12	



	1.		2.		3.		4.		5.		6.		7.		8.		9.		10.		11.		12.	
	1.1	1.2	2.1	2.2	3.1	3.2	4.1	4.2	5.1	5.2	6.1	6.2	7.1	7.2	8.1	8.2	9.1	9.2	10.1	10.2	11.1	11.2	12.1	12.2
								H	M				L	H					H					
					L				H						H		H							
												H		H	H				L			L		

H

H

